

# Product Brochure





# Bronze Pack



SFA561X  
Smeg 60cm Classic Thermoseal Electric Oven

**FEATURES**  
Thermoseal technology  
Ever Clean enamel  
79L capacity  
8 total cooking functions

**597mmW x 571mmD x 592mmH**  
Fingerprint proof stainless steel  
Eclipse high visibility black glass  
8 total cooking functions  
Text on panel display  
79 litre oven capacity  
5 cooking levels  
Temperature range 30°C–250°C  
90-minute maximum variable countdown stop cook, Manual cooking selection  
Ever Clean enamel  
1 x 40W side-mounted halogen light  
Safety — Cool Door technology, Thermal protection system



CIR66XS3  
Smeg 60cm Classic Gas Cooktop

**FEATURES**  
4 burners  
15 mj/hr ultra-rapid burner  
Flame failure device  
Cast iron trivets  
Side controls

**585mmW x 500mmD x 45mmH**  
Stainless steel  
**4 burners:**  
1 x Ultra-rapid burner (wok): 15 mj/hr  
2 x Semi-rapid burners: 5.9 mj/hr  
1 x Auxiliary burner: 4.8 mj/hr  
Automatic electronic ignition  
Gas connection set for natural gas — regulator supplied and adaptable for ULPG — no regulator required  
Flame failure device fitted to each burner  
Built-in one piece hob, suits 60cm cabinet

**Supplied Accessories**  
2 x Cast iron trivets  
1 x Wok stand  
1 x Pot rest



SAH461SS  
Smeg 60cm Telescopic Rangehood

**FEATURES**  
Stainless steel  
LED lighting  
Three speeds  
  
**600mmW x 300mmD x 175mmH**  
Stainless steel  
1 x 100W motor  
Max airflow — 250m³/hr (IEC 61591)  
Noise rating — 38–52 dBA (IEC 60704-3)  
Illumination — 2 x 3W LED  
Three speeds, side switch  
60mm stainless steel fascia

**Supplied Accessories**  
2 x Aluminium filters with charcoal layer inserted

**Ducting Options**  
Duct to atmosphere or recirculate to kitchen — 125mm diameter ducting required



DWA6214S  
Smeg 60cm Freestanding Dishwasher

**FEATURES**  
Orbital Wash system  
Active Acquastop  
5 programs  
5 stage filtration system  
End of cycle indicator  
  
**598mmW x 600mmD x 850mmH**  
14 place settings  
Silver finish  
LED display  
5 programs  
End of cycle indicator — with acoustic signal  
Orbital wash system  
Temperatures 45°, 50°, 65° & 70°C  
FlexiTabs  
Self balancing hinges  
**Baskets**  
Top — 3 adjustable levels  
Bottom — half tilting rack  
Hot or cold water connection (60°C Max)  
3-6-9 hours timer, with automatic soak  
Stainless steel 5-stage filtration  
Natural condenser drying  
Safety — Active Acquastop  
Water rating — 5 star



# Silver Pack



SFPA6309X  
Smeg 60cm Classic Thermoseal Pyrolytic Oven

- FEATURES**
- Thermoseal technology
  - Pyrolytic cleaning
  - Ever Clean enamel
- 597mmW x 571mmD x 592mmH**
- Fingerprint proof stainless steel
  - Eclipse high visibility black glass
  - 13 total functions including Sabbath Mode, Defrost, Proving and Keep Warm
  - Compact LCD display
  - 79 litre oven capacity
  - 5 cooking levels
  - Temperature range 30°C–280°C
  - Fully programmable
  - Pyrolytic / ECO Pyrolytic cleaning
  - 2 x 40W halogen lighting
  - Safety — Cool Door technology, Thermal protection system, Child safety lock, Controls lock

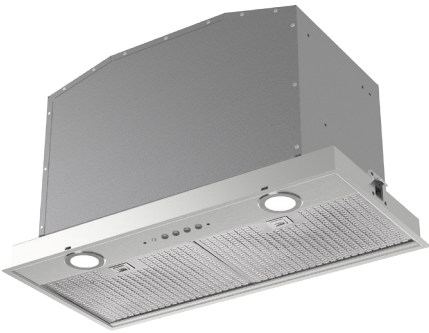
- Supplied Accessories**
- 1 x Chrome grill insert
  - 2 x Chrome shelves
  - 1 x 20mm enamelled baking tray
  - 1 x 40mm enamelled baking tray
  - 1 x Partial telescopic guides
  - 1 x Removable roof liner



CIR66XS3  
Smeg 60cm Classic Gas Cooktop

- FEATURES**
- 4 burners
  - 15 mj/hr ultra-rapid burner
  - Flame failure device
  - Cast iron trivets
  - Side controls
- 585mmW x 500mmD x 45mmH**
- Stainless steel
  - 4 burners:**
    - 1 x Ultra-rapid burner (wok): 15 mj/hr
    - 2 x Semi-rapid burners: 5.9 mj/hr
    - 1 x Auxiliary burner: 4.8 mj/hr
  - Automatic electronic ignition
  - Gas connection set for natural gas — regulator supplied and adaptable for ULPG — no regulator required
  - Flame failure device fitted to each burner
  - Built-in one piece hob, suits 60cm cabinet

- Supplied Accessories**
- 2 x Cast iron trivets
  - 1 x Wok stand
  - 1 x Pot rest



PUM601X  
Smeg 60cm Undermount Rangehood

- FEATURES**
- Stainless steel
  - High air extraction
  - Stainless steel filters, dishwasher safe
  - Three speeds
- 600mmW x 290mmD x 254mmH**
- Stainless steel
  - 1 x 190W motor
  - Max airflow — 700m³/hr (IEC 61591)
  - Noise rating — 51–61 dBA (IEC 60704-3)
  - Illumination — 2 x 3W LED
  - Three speeds, electronic control

- Supplied Accessories**
- 1 x 5-ply stainless steel honeycomb grease filter, dishwasher safe

- Optional Accessories**
- Activated charcoal filters

- Ducting Options**
- Duct to atmosphere or recirculate to kitchen — 150mm diameter ducting required



DWAU6214X  
Smeg 60cm Underbench Dishwasher

- FEATURES**
- Orbital Wash system
  - Active Acquastop
  - 5 programs
  - 5-stage filtration system
  - End of cycle indicator
- 598mmW x 570mmD x 818-888mmH (max)**
- 14 place settings
  - Stainless steel finish
  - LED display
  - 5 programs
  - End of cycle indicator — with acoustic signal
  - Orbital wash system
  - Temperatures 45°, 50°, 65°, 70°C
  - FlexiTabs
  - Self balancing hinges
- Baskets**
- Top — 3 adjustable levels
  - Bottom — half tilting rack
- Hot or cold water connection (60°C Max)
  - 3-6-9 hours timer, with automatic soak
  - Stainless steel 5-stage filtration
  - Natural condenser drying
  - Safety — Child safety system, Active Acquastop
  - Water rating — 5 star

# Gold Pack



SFPA6125  
Smeg 60cm Linear Thermoseal Pyrolytic Oven

### FEATURES

Thermoseal technology  
SmartSense — 20 auto menus  
Pyrolytic cleaning  
Ever Clean enamel  
Soft Close door

597mmW x 571mmD x 592mmH

Stainless steel and Stopsol® reflective glass  
16 total functions including Sabbath mode, Defrost, Proving and Keep Warm + 20 SmartSense auto menus  
Large LCD display  
79 litre oven capacity  
5 cooking levels  
Temperature range 30°C–280°C  
Fully programmable  
Pyrolytic / ECO Pyrolytic cleaning  
2 x 40W halogen lighting  
Safety — Cool Door technology, Thermal protection system, Child safety lock, Controls lock

### Supplied Accessories

1 x Chrome grill insert  
2 x Chrome shelves  
1 x 20mm enamelled baking tray  
1 x 40mm enamelled baking tray  
1 x Partial telescopic guides



PGA64  
Smeg 60cm Classic Low-profile Gas Cooktop

### FEATURES

4 burner, diamond configuration  
15 mj/hr triple wok burner  
Flame failure device  
Cast iron trivets  
Front controls

617mmW x 509mmD x 75mmH

Stainless steel

### 4 burners:

Left (wok): 15.0 mj/hr  
Front centre: 3.9 mj/hr  
Rear centre: 3.9 mj/hr  
Right: 12 mj/hr

Automatic electronic ignition  
Gas connection set for natural gas - regulator supplied and adaptable for ULPG — no regulator required  
Flame failure device fitted to each burner

### Supplied Accessories

1 x Set of cast iron trivets  
1 x Cast iron pot rest



PUM601X  
Smeg 60cm Undermount Rangehood

### FEATURES

Stainless steel  
High air extraction  
Stainless steel filters, dishwasher safe  
Three speeds

600mmW x 290mmD x 254mmH

Stainless steel  
1 x 190W motor  
Max airflow — 700m³/hr (IEC 61591)  
Noise rating — 51–61 dBA (IEC 60704-3)  
Illumination — 2 x 3W LED  
Three speeds, electronic control

### Supplied Accessories

1 x 5-ply stainless steel honeycomb grease filter, dishwasher safe

### Optional Accessories

Activated charcoal filters

### Ducting Options

Duct to atmosphere or recirculate to kitchen — 150mm diameter ducting required



DWAI6214X  
Smeg 60cm Semi-integrated Dishwasher

### FEATURES

Orbital Wash system  
Active Acquastop  
5 programs  
5 stage filtration system  
End of cycle indicator

598mmW x 570mmD x 818-888mmH (max)

14 place settings  
Stainless steel panel  
LED lights  
5 programs  
End of cycle indicator — with acoustic signal  
Orbital wash system  
Temperatures 45°, 50°, 65°, 70°C  
FlexiTabs  
Self balancing hinges

### Baskets

Top — 3 adjustable levels  
Bottom — half tilting rack

Hot or cold water connection (60°C Max)  
3-6-9 hours timer, with automatic soak  
Stainless steel 5-stage filtration  
Natural condenser drying  
Safety — Child safety system, Active Acquastop  
Water rating — 5 star



# Microwave & Trim Kit Option



# Refrigeration Option



SA37X  
Smeg 34L Freestanding Microwave Oven



PTK60X34  
Smeg Trim Kit for SA37X Microwave Oven

**FEATURES**  
10 automatic programs

560mmW x 440mmD x 344mmH  
Stainless steel  
Digital LED display  
34 Litre capacity  
Stainless steel cavity with ceramic glass base  
345mm diameter turntable  
10 power levels  
1000W microwave power  
4 auto cook functions  
Defrost by weight  
Control panel — electronic button & dial  
99-minute timer  
Safety — Thermal protection

**Functions**  
Frozen vegetables  
Pasta  
Frozen pizza  
Dish warmer

**Optional Accessories**  
STK60X34D — 60cm stainless steel trim kit  
STK70X34 — 70cm stainless steel trim kit



FQ60XPA  
Smeg Four-door Refrigerator/Freezer

**FEATURES**  
Stainless steel  
Extra-fresh blue light area  
Separate cooling systems  
Mechanical ice maker  
Holiday and ECO functions

920mmW x 1825mmH x 765mmD (including handle)

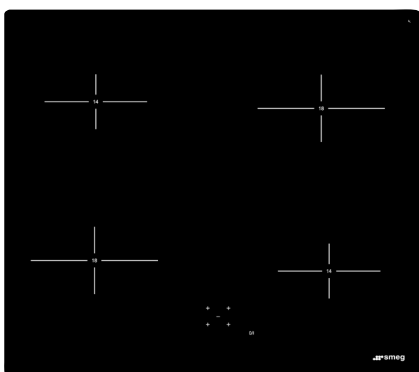
**Capacity**  
Refrigerator: 394 Litres  
Freezer: 189 Litres  
Total: 583 Litres

**Refrigerator**  
3 x Quick chill, spill proof glass shelves  
4 x Storage compartments  
4 x Inner door shelves  
2 x Inner door shelves with cover  
2 x Inner door shelves with wire support

**Freezer**  
1 x Wire shelf  
4 x Storage compartments  
2 x Two-drawer ice compartments  
1 x Mechanical ice maker  
Right hand freezer zone can be converted to refrigerator

Extra-fresh blue interior lighting (refrigerator)  
Holiday and ECO functions  
Bacteria supression system  
Separate cooling systems

# Cooktop Options



SA611XC-1  
Smeg 60cm Ceramic Electric Cooktop

## FEATURES

High speed elements, full heat in 7 seconds  
Touch control  
4 zones  
Residual heat indicators

590mmW x 520mmD x 49mmH

Black ceramic surface, 12mm bevelled edge

### Four cooking zones:

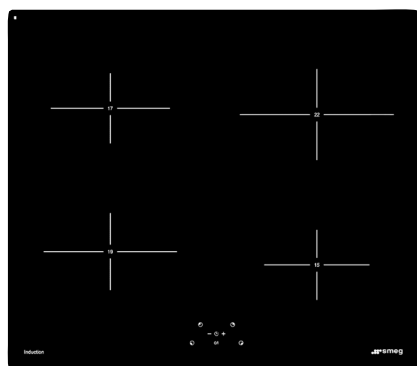
Front left: 1800W | 180mm diameter  
Rear left: 1200W | 145mm diameter  
Front right: 1200W | 145mm diameter  
Rear right: 1800W | 180mm diameter

9 heat settings per zone

Built-in, one piece hob installation

Touch control

Safety — Lock 'ON', Power 'ON' indicator, 4 residual heat indicators



PIP264B-1  
Smeg 60cm Induction Cooktop

## FEATURES

4 zones, with 2-zone boost setting  
Automatic pan recognition  
Residual heat indicators  
Touch control

590mmW x 520mmD x 4mmH ceramic surface

Black ceramic surface, frameless straight edging

### Four cooking zones:

Front left: 1400W, 190mm diameter | 2000W boost  
Rear left: 1500W, 170mm diameter  
Front right: 1500W, 155mm diameter  
Rear right: 1850W, 220mm diameter | 2300W boost

9 heat settings per zone

Touch control

4 timers, simultaneous or separate operation

Independent egg timer

Built-in hob, topmount installation

Safety — Pan detection, Automatic cut-off, Touch control lock,

Residual heat indicators, Automatic spillage stop

Automatic pan size recognition

# Smeg Contacts

## Phone

Sydney Head Office

Smeg Service

Smeg Spare Parts

Optional Accessories

All Additional Enquiries

02 8667 4888

02 8667 4833 | [service@smeg.com.au](mailto:service@smeg.com.au)

02 8667 4875 | [spareparts@smeg.com.au](mailto:spareparts@smeg.com.au)

02 8667 4888

**02 8667 4888**

## Web

Pre and Post Purchase Cooking Classes

User Manuals

[www.smeg.com.au/smeg-product-demonstration](http://www.smeg.com.au/smeg-product-demonstration)

[www.smeg.com.au/user-manuals](http://www.smeg.com.au/user-manuals)

## Visit

Smeg Sydney Showroom

2-8 Baker Street, Banksmeadow NSW 2019

**COLLEEN PLUMB**  
Account Manager, Smeg Projects and New Homes  
0418 411 053  
[colleenp@natelect.com.au](mailto:colleenp@natelect.com.au)

